

DELHI PUBLIC SCHOOL, JAMMU
REVISION SHEET FOR CYCLE TEST-II
SESSION (2019 – 2020)

Class – VIII

Subject: Science

SYLLABUS- CHAPTER 8; CELL-STRUCTURE AND FUNCTIONS
CHAPTER 14; CHEMICAL EFFECTS OF ELECTRIC CURRENT
CHAPTER 15; SOME NATURAL PHENOMENA
CHAPTER 16; LIGHT

General instructions:

1. The question paper consists of three sections A, B and C. The sections are to be attempted separately. All questions are compulsory.
2. All questions in Section A are one mark question comprising VSA type, assertion-reason type questions and MCQs.
3. All questions in section B are three marks, short answer type questions. These are to be answered in 50 – 60 words each
4. All questions in section C are five marks, long answer type questions. These are to be answered in 80 – 90 words each.
5. This question paper consists of a total of 18 questions.

SECTION-A

1. Define Epicentre.
2. What are prokaryotic cells? Give any two examples.
3. Answer the following questions on the basis of your understanding of the following paragraphs and related studied concepts:

When two mirrors are inclined to each other at an angle, many images of the object(placed before them) are seen. This is because the image formed in one mirror acts as the object for the other. Many images formed in this manner are called multiple images. By varying the angle between the two mirrors, we can get any number of images e.g., when an object is kept in between two mirrors placed perpendicular to each other, three images are formed. The actual number of images (n) formed depends upon the angle (Θ) between the mirrors and can be mathematically calculated by the following formula:-

$$\text{Number of images formed}(n) = \frac{360^\circ}{\Theta} - 1$$

- (a) What is the number of images formed when the angle between two mirrors is 0?
 - (b) Which device is used on the principle of multiple reflections?
 - (c) If the angle between two mirrors is 90° . What is the number of images formed?
4. For question number 4, two statements are given- one labeled assertion(A) and the other labeled reason(R). Select the correct answer to these questions from the codes (i), (ii), (iii) and (iv) as given below;

Assertion (A):

Iron objects are electroplated with chromium, nickel or zinc to protect them from rusting.

Reason (R):

Because chromium, nickel and zinc do not corrode easily.

- (i) A is true but R is false.
 - (ii) Both A and R are true and R is the correct explanation of A
 - (iii) A is false but R is true
 - (iv) Both A and R are true but R is not correct explanation of A.
5. The cells of inner lining of our cheek are an example of
- | | |
|-----------------|--------------------|
| a) plant cells | b) bacterial cells |
| c) animal cells | d) none of these |

6. In hypermetropia, image is formed _____ the retina
- a) in front of
 - b) on
 - c) behind
 - d) above

SECTION-B

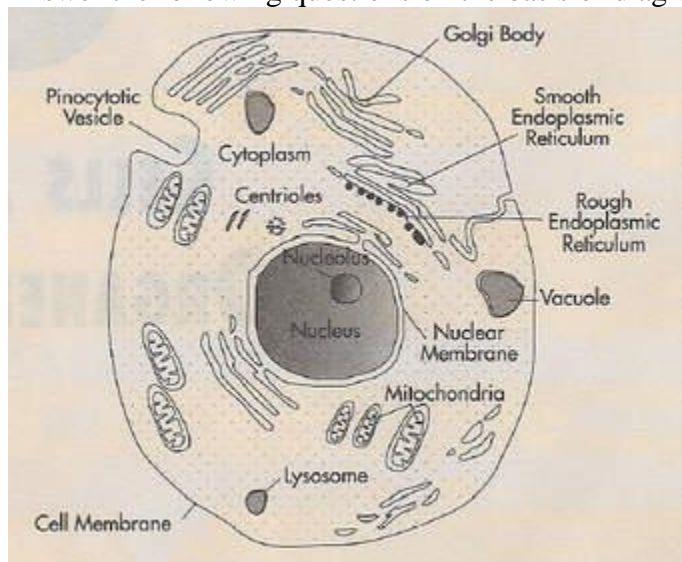
SHORT ANSWER TYPE

7. Write in detail three useful effects of lightning.

OR

Differentiate between three layers of the earth.

8. What are chemical effects of current? Write down its two uses.
9. Answer the following questions on the basis of diagram



- a) The diagram depicted in the picture is?
 - b) What is the function of endoplasmic reticulum?
 - c) Which organelle of the cell is called powerhouse of the cell?
10. Write down the differences between regular and diffused (irregular) reflection.
11. What are the characteristics of image formed by a plane mirror?
12. Write down an activity to demonstrate electroplating of copper.
13. What is gold leaf electroscope? Write down its uses in detail.
14. Why is it not safe for an electrician to carry out electrical repairs in the outdoor areas during heavy downpour?
15. Name the two scientists who gave cell theory. What does this theory states?

SECTION-C

LONG ANSWER QUESTIONS

16. Draw a well labeled diagram of the human eye. Write down its working.

OR

Discuss in detail myopia and hypermetropia. How these defects are corrected?

17. What is an earthquake? Briefly discuss its three causes.
- 18 (a) Differentiate between plant cells and animal cells. (Five points)

(b) Draw a well labeled diagram of a prokaryotic cell.